

Using TestNav

Note: All background programs must be shut down in order for TestNav to run properly.

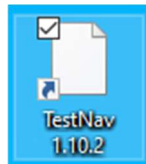
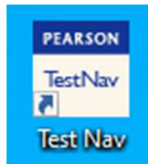
Week before:

1. Make sure you have the correct version of TestNav. It should be labeled **'TestNav 1.10.2'**. If you do not have this program, or it looks like a blank page, please let your teacher know, and someone from the Tech department will manually download the program onto your computer.

- a. Correct Version of TestNav 1.10.2:



- i. Note: If you only see 'TestNav' or the icon for the program is blank, **please let your teacher know**, IT will need to download the correct version of the TestNav program.



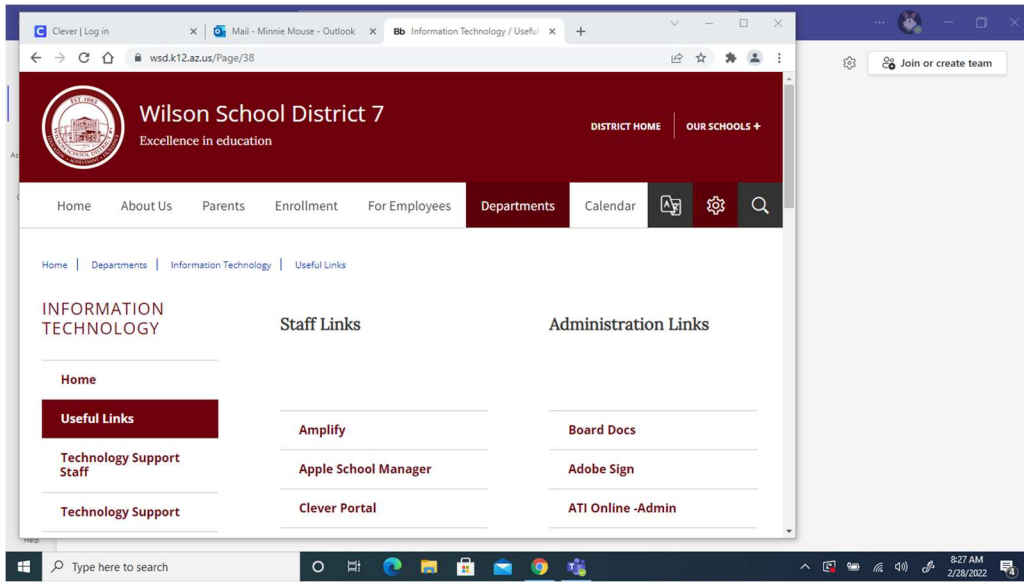
2. **Check for Updates** and **Shut Down Laptop** before leaving for the weekend.
3. **Plug in your laptop** before you go to sleep the night before the test and make sure it charges. This will make sure that your laptop is fully charged for the day of the test.

Checklist for the night before the test:

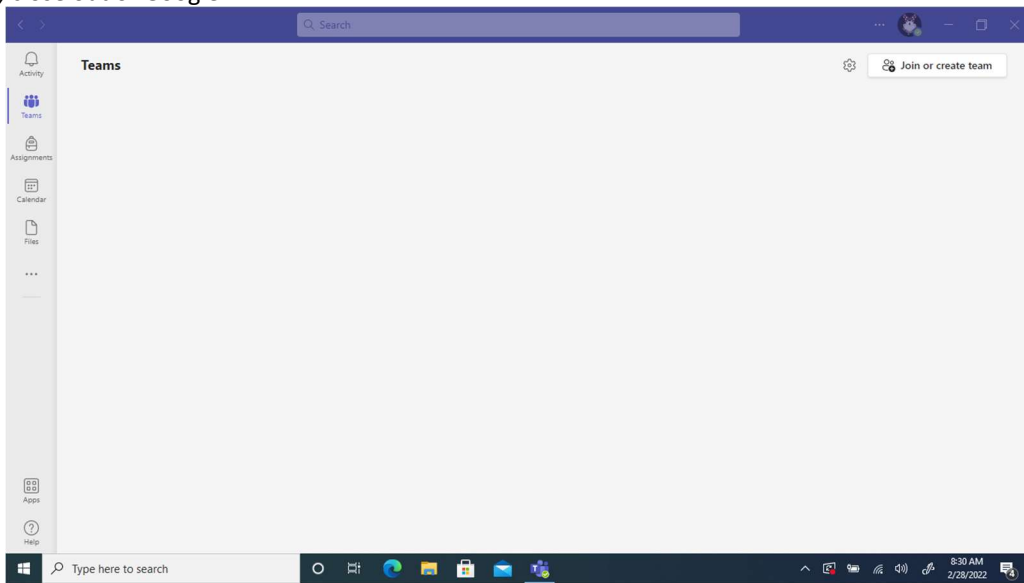
- TestNav 1.10.2 is on Desktop
- Laptop is up-to-date
- Laptop is fully charged
- Charger is in backpack by the next morning

Day of:

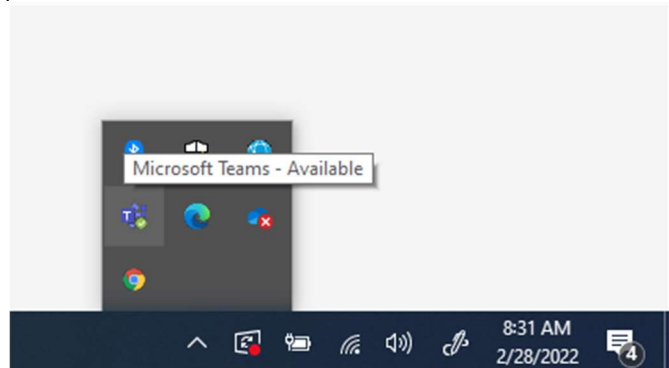
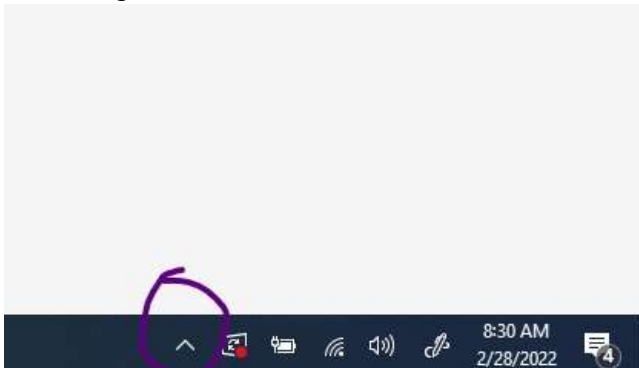
Log in to your laptop and let everything load. (Including all three of the Google pages and Microsoft Teams that normally begins during startup.)



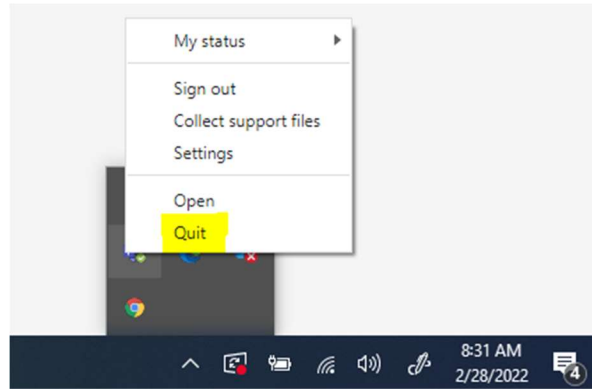
Once it has loaded, close out of Google.



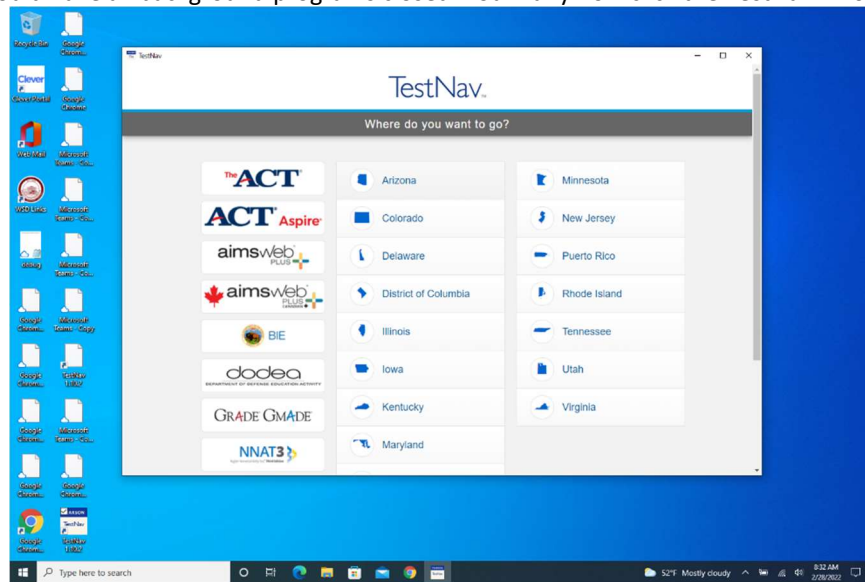
In the bottom right hand corner of the screen, click on the little 'Up' arrow.



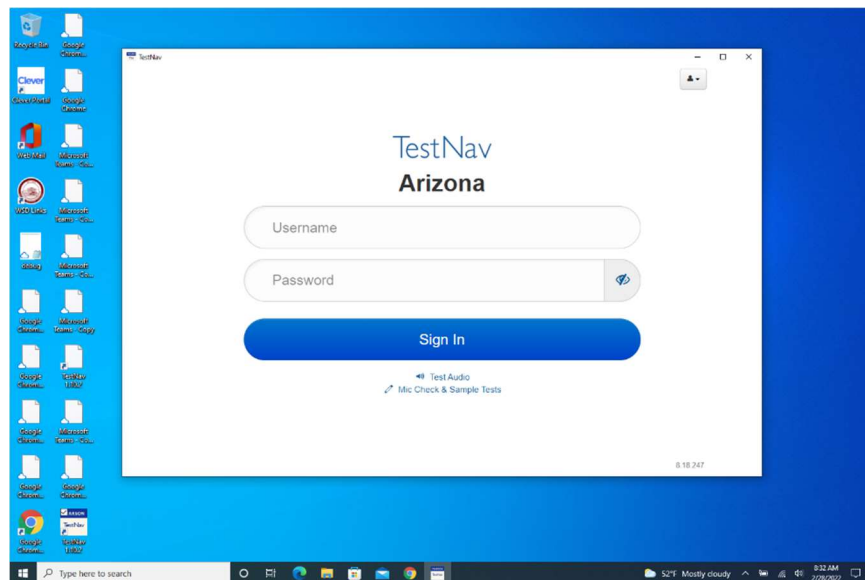
Right click the Teams icon, then select 'Quit'.



Once that is done, you should have all background programs closed. You may now click the TestNav 1.10.2 icon.



Select 'Arizona'



Log in to your test using your testing ticket!

Note: If the app says that there are still programs running in the background, please let your teacher know and IT will help you close those programs.